

# Multilevel Dorsal Transverse Process Fracture

<sup>1</sup>Irphan Muhammed, <sup>2</sup>Vinu V Gopal

**How to cite this article:** Muhammed I, Gopal VV. Multilevel Dorsal Transverse Process Fracture. *J Spinal Surg* 2018;5(4):182.

**Source of support:** Nil

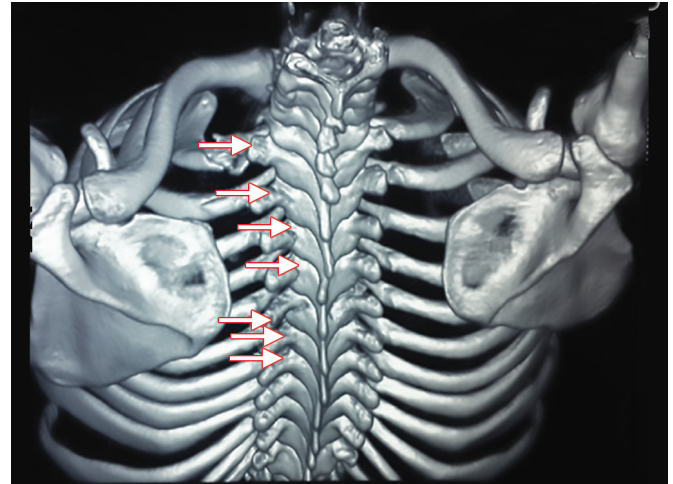
**Conflict of interest:** None

Transverse process fractures are considered minor injuries under the classification of spine fractures.<sup>1</sup> They occur following high energy direct trauma or violent muscle contraction, usually following road traffic accidents.<sup>2-4</sup> They are usually associated with pelvic hip fractures, blunt injury abdomen, and haemothorax.

This is a case of 21-year-old male with multilevel transverse process fracture. The mode of injury was road traffic accident where he was hit on the back of left side of the chest by an autorickshaw. On admission, he had pain in the left chest and left upper limb weakness. Computed tomography (CT) chest with 3D reconstruction showed left D1 to D7 transverse process fracture (Figs 1 and 2).

Other associated injuries were left haemopneumothorax, fracture bilateral first ribs, left the second rib and left brachial plexus injury. He was managed with antibiotics, analgesics, bronchodilators, physiotherapy, bed rest and supportive measures.

Transverse process fractures affecting seven vertebrae on one side is a rare entity. In this case, the injury was due



**Fig. 1:** 3D reconstruction showing left D1 to D7 transverse process fracture.

to direct trauma over the transverse process and ribs. As transverse process fracture does not produce instability, the same was managed conservatively.

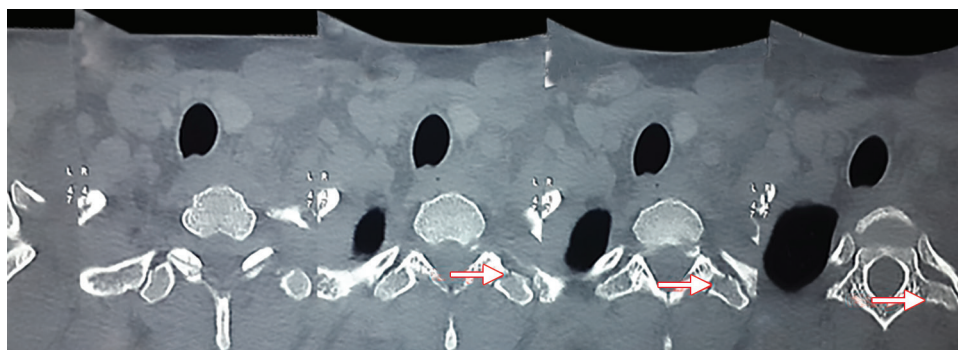
## REFERENCES

1. Greenberg MS, Handbook of neurosurgery- 8th edition, New York, Thieme, 2010, chapter 66, Thoracic lumbar and sacral spine fractures, 1003-1006.
2. Tewes DP, Fischer DA, Quick DC, Zamberletti F, Powell J. Lumbar transverse process fractures in professional football players. *The American journal of sports medicine*. 1995 Jul;23(4):507-509.
3. Miller CD, Blyth P, Civil ID. Lumbar transverse process fractures—a sentinel marker of abdominal organ injuries. *Injury*. 2000 Dec 1;31(10):773-776.
4. Patten RM, Gunberg SR, Brandenburger DK. Frequency and importance of transverse process fractures in the lumbar vertebrae at helical abdominal CT in patients with trauma. *Radiology*. 2000 Jun;215(3):831-834.

<sup>1</sup>Senior Resident, <sup>2</sup>Associate Professor

<sup>1,2</sup>Department of Neurosurgery, Government Medical College, Kottayam, Kerala, India

**Corresponding Author:** Irphan Muhammed, Senior Resident, Department of Neurosurgery, Government Medical College, Kottayam, Kerala, India, e-mail: muhdips@gmail.com



**Fig. 2:** Axial CT image showing left transverse process fracture