

## RESEARCH ARTICLE

# Effect of Insulin Therapy on Endothelial Dysfunction in Type 2 Diabetic Subjects without any Complications

<sup>1</sup>Siva P Palem

## ABSTRACT

**Introduction:** As we know endothelial dysfunction is an initial stage of vascular complications in type 2 diabetes mellitus (DM). Hypoglycaemic drugs have shown a beneficial effect on endothelial function. Insulin is a regulator hormone for endothelial function in vessels. But, there was a controversial report on the effect of exogenous insulin on endothelial function in type 2 diabetes subjects.

**Aim and objectives:** The study has been designed to observe the effect of insulin therapy on endothelial dysfunction in type 2 diabetic subjects without any complications.

**Materials and methods:** This Study include 120 Subjects (60-Diabetics and 60-Healthy Controls). MDA was manually estimated by thiobarbituric acid reactive substances (TBARS) method and anti-oxidant capacity was estimated as FRAP.<sup>19</sup> NO was measured by using kinetic cadmium reduction method.

**Result:** Significantly high level of body mass index (BMI) was identified in insulin-treated subjects than subjects with hypoglycemic drugs and healthy controls. Nitric oxide (NO) has shown significantly lower in insulin-treated subjects compared to subjects with hypoglycemic drugs and healthy controls. There was no sign in the levels of lipid profile and oxidative stress in between two treatment groups.

**Conclusion:** Significant effect of insulin therapy was observed on endothelial dysfunction in type 2 DM. Exogenous insulin itself may cause endothelial dysfunction by hyperinsulinemia because of a high-fat diet or high dosage of insulin.

**Keywords:** Clinical biochemistry, DM, Endothelial dysfunction.

**How to cite this article:** Siva P Palem. Effect of Insulin Therapy on Endothelial Dysfunction in Type 2 Diabetic Subjects without any Complications. Indian J Med Biochem 2018;22(2):132-137.

**Source of support:** Nil

**Conflict of interest:** None

## INTRODUCTION

Diabetes is a highly complicated disease in the worldwide population, and the prevalence of diabetic complications are more in number. Antidiabetic treatment was targeted

to reduce the level of blood glucose and its complications.<sup>1</sup> However, the prevalence of diabetic complication is increasing day by day in worldwide population. There are many factors contribute for the development of complications in diabetes such as hyperglycemia, dyslipidemia, obesity, endothelial dysfunction, oxidative stress, inflammation, insulin resistance, etc. Here, endothelial dysfunction may play a significant role in the development of pathogenesis and progression towards vascular complications.<sup>2,3</sup>

Endothelial dysfunction (ED) is an imbalance between vasoconstriction and vasodilatation in vascular tissues. Endothelial function is mainly regulated by endothelial-1, NO, and prostacyclin.<sup>4</sup> The most common soluble markers to analyze endothelial function include NO, vascular cell adhesion molecule-1 (VCAM-1), intercellular adhesion molecule-1 (ICAM-1), E-selectin and von Willebrand factor (vWF) etc.<sup>5,6</sup> Among these, NO is an important marker to assess vascular endothelial function and its impairment. Reduced availability of nitric oxide indicates impaired endothelial function and also an initiator for the development and progression of atherosclerosis.<sup>7</sup>

Metformin improves endothelial function in non-diabetic subjects with metabolic syndrome. Addition of metformin to insulin therapy has shown significant improvement of endothelial function but not chronic in type 2 diabetic subjects.<sup>8</sup> Troglitazone improves endothelial function in recently diagnosed type 2 diabetic subjects and this improvement was strongly associated with a reduction in fasting plasma insulin. However, the improvement of endothelial function was not seen in long-term diabetic subjects.<sup>9</sup> Earlier studies have shown a contradictory result on the effect of insulin on both beneficial and inhibitory effects on endothelial function.<sup>10,11</sup>

Since ED is an initial stage in the development of atherosclerosis. The study has been designed to assess the impact of insulin therapy on ED in type 2 DM for earlier prediction of cardiovascular risk.

## MATERIALS AND METHODS

The study was conducted on 120 subjects with the age of 38 to 59 years; among these 60 subjects were type 2 diabetic and remaining 60 were healthy controls. Study subjects were divided into three groups; healthy controls

<sup>1</sup>Assistant Professor

<sup>1</sup>Department of Biochemistry, Basaveshwara Medical College and Hospital, Chitradurga, Karnataka, India

**Corresponding Author:** Siva P Palem, Assistant Professor, Department of Biochemistry, Basaveshwara Medical College and Hospital, Chitradurga, Karnataka, India, Phone: +918838673886, e-mail: sp.biocom@yahoo.co.in

(n=60), group-I contains subjects with [oral hypoglycemic drugs (OHD) Metformin, glibenclamide or glipizide] (n=27), group-II has subjects with insulin in addition to OHD (OHDI) (n=33).

### Selection of subjects

Total 60 type 2 diabetic subjects who undergo regular anti-diabetic treatment were selected from government hospital and Vinayaka Mission's Kirupananda Variyar Medical College at Salem. Among this 27 subjects were treated with oral hypoglycemic drugs alone and remaining 33 subjects were treated with insulin in addition to oral hypoglycemic drugs.

### Inclusion and Exclusion Criteria

Type 2 diabetic subjects with regular treatment and without any diabetic complications were included in the study. Subjects with smoking, alcohol, hypertension, thyroid disorders were excluded from the study. Ethical clearance was obtained from Vinayaka Mission's Kirupananda Variyar Medical College to conduct this study.

### Sample Collection

Five ml of venous blood sample was collected after obtaining informed consent from each subject. Serum and plasma were separated from the blood sample after centrifugation at 3000 rpm. Fasting and postprandial sugar, hemoglobin A1c (HbA1c) and Lipid profile were analyzed on the same day of sample collection in auto-analyzer. The remaining sample was stored at -20°C freezer until further analyze. Malondialdehyde (MDA), ferric reducing ability of plasma (FRAP) and NO were done by the manual method.

### METHODS

Estimation of sugar was done by using glucose oxidase-peroxidase (GOD-POD) method<sup>12</sup> HbA1c was estimated by turbidimetric immunoassay method.<sup>13</sup> Total cholesterol was done by cholesterol esterase peroxidase

method,<sup>14</sup> triglyceride was measured by GPO-POD method,<sup>15</sup> high-density lipoproteins (HDL) by immune inhibition two reagent method.<sup>16</sup> low-density lipoproteins (LDL) and very low density lipoprotein (VLDL) were calculated by using standard Friedwald's equation.<sup>17</sup> MDA was manually estimated by thiobarbituric acid reactive substances (TBARS) method<sup>18</sup> and antioxidant capacity was estimated as FRAP.<sup>19</sup> NO was measured by using kinetic cadmium reduction method.<sup>20</sup>

### STATISTICAL ANALYSIS

Statistical Package for the Social Sciences (SPSS) software version 21.0 was used to evaluate the statistical significance among the study groups. Mean, standard deviation (SD) and graphs were done by using Microsoft excel. Analysis of variance (ANOVA) "Bonferroni" test was performed for a variable in parameters. The p-value <0.05 was considered as statistically significant.

### RESULTS

The study has three groups; healthy controls (n=60), diabetic subjects with OHD group 1 (n=27) and diabetic subjects with OHDI group 2 (n=33).

Table 1 shows significantly high levels of body mass index (BMI), fasting and postprandial sugars and HbA1c were observed in both group I and group II diabetic treated subjects compared to healthy controls. But, there was no significant difference among the diabetic treated groups except fasting sugar, which shows significantly high in subjects with OHD than subjects with OHDI.

Significantly high level of total cholesterol (TC), triglyceride (TGL), LDL-cholesterol (LDL-C) and VLDL-cholesterol (VLDL-C) were observed in both diabetic groups than healthy control. But, no significant difference in the level of lipid profile was identified between diabetic treated groups. We also found no significant difference in the level of HDL-C among the three groups (Table 2).

Malondialdehyde (MDA) has shown significantly high in both diabetic treated groups compared to healthy

**Table 1:** Difference between basic characteristics of study subjects

Parameters	Control (n = 60)	T2DM with OHD (Group 1 = 27)	T2DM with OHDI (Group 2 = 33)	p-value
Age	49.3 ± 10.27	48.96 ± 10.65	52.39 ± 9.76	0.310
BMI (Kg/m <sup>2</sup> )	20.48 ± 0.81	23.41 ± 3.07*	25.30 ± 2.91* <sup>@</sup>	0.000
FBS (mg/dL)	87.62 ± 9.95	171.25 ± 81.54* <sup>\$</sup>	147.84 ± 50.89*	0.000
PPBS (mg/dL)	119.65 ± 6.07	280.71 ± 87.44*	274.95 ± 86.45*	0.000
HbA1c (%)	5.21 ± 0.29	9.24 ± 2.64*	8.96 ± 2.20*	0.000

OHD: Oral hypoglycaemic drugs, OHDI: Insulin in addition to hypoglycaemic drugs

'p' value <0.05 is statistically significant.

'\*\*' Diabetic treated groups are significantly higher than healthy control

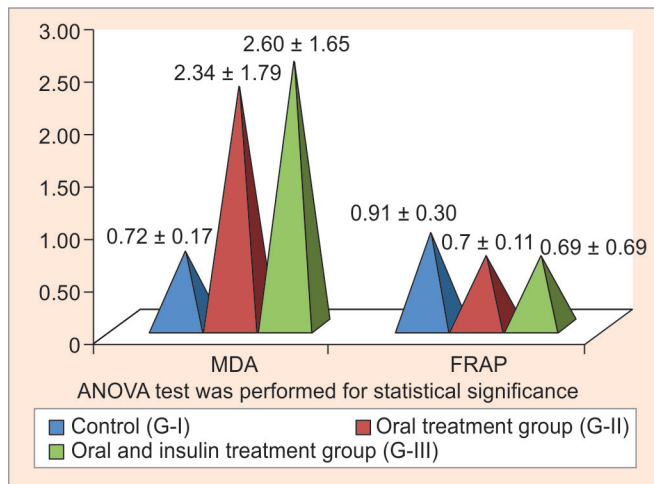
'@' Insulin treated group has significantly higher than non-insulin treated group

'\$' Insulin treated group has significantly lower than non-insulin treated group

**Table 2:** Level of lipid profile between three study subjects

Parameters	Control (n = 60)	T2DM with OHD (Group 1 = 27)	T2DM with OHDI (Group 2 = 33)	p-value
TC	158.98 ± 17.91	203.26 ± 39.43*	187.59 ± 40.24*	0.000
TGL	105.07 ± 35.01	156.74 ± 66.99*	166.19 ± 67.53*	0.000
HDL	41.65 ± 9.28	40.41 ± 7.72	41.59 ± 8.40	0.814
LDL	96.32 ± 21.25	194.22 ± 37.28*	179.44 ± 45.43*	0.000
VLDL	21.01 ± 7.00	31.30 ± 13.49*	33.28 ± 13.55*	0.000

OHD: Oral hypoglycaemic drugs, OHDI: Insulin with hypoglycaemic drugs



ANOVA test was performed for statistical significance.

**Graph 1:** Status of oxidative stress between the study groups

controls. But there was no significant difference among the diabetic treated groups.

Significantly lower level of FRAP was observed in both diabetic treated groups than healthy controls (Graph 1).

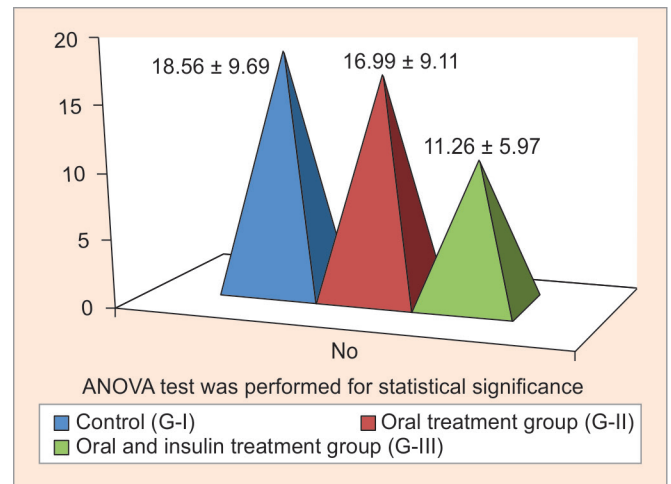
Significantly lower level of NO was identified in OHDI group than OHD group and healthy controls. OHD group has shown a slightly lower level of NO when compared to healthy controls, but statistically not significant (Graph 2).

## DISCUSSION

Type 2 diabetic subjects are more prone to cardiovascular diseases in the worldwide population. Even though the subjects undergo anti-diabetic treatment, the complications are more in these cases. Insulin is not a treatment for type 2 diabetic subjects, but in uncontrolled condition, insulin is required. Earlier studies have been reported that hyperinsulinemia itself is a risk factor in causing vascular complications.<sup>21-23</sup> However, endothelial dysfunction is an initial stage of developing vascular complications. The following factors are evaluated to see the effect of insulin treatment on endothelial dysfunction in type 2 diabetic subjects.

### Body Mass Index

As we know, obesity is a major factor in causing cardiovascular risk in type 2 diabetes subjects. The present



ANOVA test was performed for statistical significance.

**Graph 2:** Status of Nitric oxide between three groups

study has shown a significantly high level of BMI in two diabetic treated groups (groups 1 and 2) than healthy controls. Earlier studies have been reported that metformin can reduce the level of BMI compared to sulfonylurea drugs and insulin.<sup>24,25</sup> Another study had shown that type 1 and 2 diabetes have a significantly high level of BMI in intensively treated subjects compared to subjects with conventional treatment.<sup>26</sup>

The present study also found a significantly high level of BMI in insulin-treated subjects compared to subjects with hypoglycemic drugs alone. Type 2 diabetic subjects, who are treated with insulin, they use to have a high-calorie intake to prevent nocturnal hypoglycemia. It was also shown that increased BMI might be due to enhanced conservation of ingested calorie. Another reason might be due to "overinsulinized periphery by exogenous insulin when compared to insulinized liver". This causes accumulation of fat mass in insulin-treated subjects.<sup>26,27</sup> Nevertheless, insulin is an effective treatment for hyperglycaemic subjects, but it also has an adverse effect on cardiovascular risk by increasing BMI.

### Glycosylated Hemoglobin

Significantly high level of HbA1c was observed in both diabetic treated groups than healthy controls. But, there was no significant difference among diabetic treated groups. An earlier study had found that hypoglycemic

drugs have a similar effect on lowering HbA1c, nevertheless; metformin had more effective for long-term glycaemic control.<sup>28</sup> Another study has stated that insulin glargine with metformin and neutral protamine hagedorn (NPH) with metformin have shown good glycaemic control in diabetes.<sup>29</sup> In our study, we have found a significantly high level of fasting sugar in OHDI group than OHD group. But, there was the no significant difference in the level of postprandial sugar between two diabetic treated groups. All diabetic subjects in this study were treated with hypoglycemic drugs alone or in addition to insulin. Here, poor glycaemic control and treatment might be the reason for the insignificant difference in the level of HbA1c between diabetic treated groups.

### Lipid Profile

Dyslipidaemia is one of the foremost recognized factors to cause complications in DM.<sup>30</sup> The present study had shown significantly high levels of cholesterol, triglyceride, LDL-C, and VLDL-C in two diabetic treated groups compared to healthy controls. But, there was no significant difference in the level of HDL-C among the groups. The study also has identified no significant difference in the levels of lipid profile among the diabetic treated groups. Earlier studies have been identified significantly high levels of cholesterol, triglyceride, LDL-C, VLDL-C and significantly lower level of HDL-C in diabetic subjects than in healthy controls.<sup>31,32</sup> Most of the studies on type 2 diabetic subjects have recognized that glycaemic control have a major role in maintaining LDL level.<sup>33-35</sup>

The main target of antidiabetic treatment in type 2 diabetic subjects is to maintain the glycaemic status in blood circulation and reduce the complications. An earlier study has shown the beneficial effect of anti-diabetic treatment on lipid metabolism. It also stated that lipid profile can be improved along with development in glycaemic control.<sup>34</sup> Among hypoglycaemic drugs treated subjects, metformin-treated subjects have low LDL level than subjects with sulfonylurea.<sup>36</sup> As we know diabetic dyslipidemia is primarily associated with insulin resistance and poor glycaemic control. In our study, poor glycaemic control might be the reason for the insignificant difference in the level of lipid profile among diabetic treated groups.

### Oxidative Stress

In our study, a significantly high level of MDA was found in two diabetic treated groups compared to healthy controls. High level of MDA was identified in OHDI subjects compared to OHD, but statistically insignificant. Significantly lower level of FRAP was observed in OHDI, and OHD treated subjects than healthy controls. But,

there was no significant difference in the level of FRAP between two diabetic treated groups. Earlier studies have been reported that increased level of MDA and reduced anti-oxidant in T2DM than healthy controls.<sup>31,32,37</sup> Glucose oxidation may be the reason for increase free radicals. Experimental studies have been shown the alteration of proteins and lipids in diabetic subjects. Poor glycaemic control might be the reason to stimulate platelet aggregation and auto-oxidation of glucose and finally produce free radicals.<sup>38,39</sup> Lipids are the primary targets of ROS and produce highly reactive aldehydes includes MDA, acrolein, 4-hydroxynonenal (4-HNE), 4-oxononenal (4-ONE) and isolevuglandins (IsoLGs).<sup>40</sup> Poor glycaemic control might be the reason for the high level of MDA in both diabetic treated groups.

### Endothelial Dysfunction

The present study has shown a significantly lower level of NO in OHDI group than OHD group and healthy controls. Slightly lower level of NO was observed in subjects with OHD alone compared to healthy control, but statistically insignificant. Earlier studies have been reported that increased availability of NO by metformin therapy in diabetic subjects.<sup>41,42</sup> This might be the reason for the insignificant difference in the level of NO between subjects with hypoglycemic drugs alone and healthy controls.

Clinical studies have been reported that insulin sensitizers have a beneficial effect on vascular endothelium in diabetic subjects.<sup>43,44</sup> Chronic insulin treatment improves the vascular relaxation in diabetes, but in acute insulin treatment does not show any improvement in vascular relaxation even diabetic subject in glycaemic control.<sup>45</sup> Insulin is an important promoter for activation of eNOS to produce nitric oxide in endothelium. Insulin binds to endothelial receptor leads to phosphorylation of Insulin receptor substance-I (IRS-I) and activates eNOS through PI3 kinase/Akt pathway. This mechanism is further substantiated by the fact that mutation of IRS-I and inhibitors of PI3 kinase/Akt can block the activation of eNOS by insulin.<sup>42,43</sup> Shanik et al. had observed that continuous exposure to high level of insulin or administration of high dosage of insulin can aggravate the extent of insulin resistance and its complication.<sup>46</sup> This might be the reason for the lower level of NO in insulin-treated diabetic subjects than subjects with hypoglycemic drugs alone.

Obesity is another known factor in causing insulin resistance. In obese subjects, adipose tissue releases a high amount of non-essential fatty acids, glycerol, hormones, pro-inflammatory cytokines and other factors which are

responsible for the development of insulin resistance.<sup>47</sup> Cao et al. had reported that increased basal insulin signaling (Akt-dependent) causes insulin resistance and hyperinsulinemia through the promotion of fat accumulation and oxidative stress in liver and skeletal muscle. This was identified in a high-fat diet experimental mice.<sup>48</sup> In our study, we have found a high level of BMI in insulin-treated subjects. Hence, this might be another reason for the lower level of NO in insulin-treated subjects.

Since exogenous insulin is a common treatment for Type 1 diabetes mellitus, but for type 2 diabetes only in an uncontrolled condition. Instead of changing medicine or increasing dosages of insulin, the physician can advise the patients to go for physical exercises and low-fat diet to control glycaemic status. Further follow-up study is required to focus on the dosage of insulin to get a precise result on the effect of insulin on endothelial dysfunction in type 2 DM.

## CONCLUSION

We have found a significant effect of insulin therapy on endothelial dysfunction in type 2 diabetic subjects. We also found that without dyslipidemia and oxidative stress there will be a chance of endothelial dysfunction in insulin-treated type 2 diabetic subjects. Hence, frequent examination of NO level is also necessary for type 2 diabetic subjects to predict early onset of complications.

## Limitation

The present study has a low sample size due to the inclusion and exclusion criteria of subjects. Further follow-up study is required on T2DM with different dosage of insulin to give better result on the effect of insulin therapy on endothelial dysfunction in T2DM.

## REFERENCES

1. Stefan RM, Nita C, Craciun A, Rusu A, Hancu N. Effect of the early intensive multifactorial therapy on the cardiovascular risk in patients with newly diagnosed type 2 diabetes: an observational, prospective study. *Clujul Medical* 2015;88(2):168.
2. Buchan DS, Thomas NE, and Baker JS. Novel risk factors of cardiovascular disease and their associations between obesity, physical activity and physical fitness. *Journal of public health research* 2012;1(1):59.
3. De Pablo P, Dietrich T, Karlson EW. Antioxidants and other novel cardiovascular risk factors in subjects with rheumatoid arthritis in a large population sample. *Arthritis Care and Research* 2007; 57(6): 953-962.
4. Atul A, Aggarwal S, Veneet D, Yadav NH. Diabetic Nephropathy: An Updated Review. *International Journal of Chemical and Analytical Sciences* 2010;1(3):50-57.
5. Thorand B, Baumert J, Chambless L, Meisinger C, Kolb H, Doring A, et al. Elevated markers of endothelial dysfunction predict type 2 diabetes mellitus in middle-aged men and women from the general population. *Arteriosclerosis, thrombosis, and vascular biology*. 2006 Feb 1;26(2):398-405.
6. Horstman LL, Jy W, Jimenez JJ, Ahn YS. Endothelial micro-particles as markers of endothelial dysfunction. *Front Biosci* 2004;9(1):118-135.
7. Davignon J, Ganz P. Role of endothelial dysfunction in atherosclerosis. *Circulation* 2004;109(23 suppl 1):III-27.
8. Gkaliagkousi, E., Shah, A., and Ferro, A. Review: Pharmacological and non-pharmacological treatment of endothelial dysfunction: relevance to diabetes. *The British Journal of Diabetes and Vascular Disease* 2007;7(1):5-10.
9. Caballero AE, Saouaf R, Lim SC, Hamdy O, Abou-Elenin K, O'Connor C, et al. The effects of troglitazone, an insulin-sensitizing agent, on the endothelial function in early and late type 2 diabetes: a placebo-controlled randomized clinical trial. *Metabolism*. 2003 Feb 1;52(2):173-180.
10. Arcaro G, Cretti A, Balzano S, Lechi A, Muggeo M, Bonora E, Bonadonna RC. Insulin causes endothelial dysfunction in humans sites and mechanisms. *Circulation* 2002;105(5):576-582.
11. Cardillo C, Nambi SS, Kilcoyne CM., Choucair WK, Katz A, Quon M J, Panza J. A. Insulin stimulates both endothelin and nitric oxide activity in the human forearm. *Circulation* 1999;100(8):820-825.
12. Lott JA, Turner K. Evaluation of Trinder's glucose oxidase method for measuring glucose in serum and urine. *Clinical chemistry* 1975;21(12):1754-1760.
13. Engbaek F, Christensen SE, Jespersen B. Enzyme immunoassay of hemoglobin A1c: analytical characteristics and clinical performance for patients with diabetes mellitus, with and without uremia. *Clinical chemistry* 1989; 35(1): 93-97.
14. Allain CC, Poon LS, Chan CS, Richmond WFPC, Fu PC. Enzymatic determination of total serum cholesterol. *Clinical chemistry* 1974;20(4):470-475.
15. Jacobs NJ, and VanDemark PJ. Method of triglyceride estimation. *Arch. Biochem. Biophys* 1960;8:250-255.
16. Grove TH. Effect of reagent pH on determination of high-density lipoprotein cholesterol by precipitation with sodium phosphotungstate-magnesium. *Clinical chemistry* 1979;25(4):560-564.
17. Warnick GR, Knopp RH, Fitzpatrick V, Branson L. Estimating low-density lipoprotein cholesterol by the Friedewald equation is adequate for classifying patients on the basis of nationally recommended cut points. *Clinical Chemistry* 1990;36(1):15-19.
18. Lefevre G, Beljean-Leymarie M, Beyerle F, Bonnefont-Rousselot D, Cristol JP, Therond P, et al. Evaluation of lipid peroxidation by measuring thiobarbituric acid reactive substances. In *Annales de biologie clinique* 1997;5(3):305-319.
19. Benzie IF, Strain JJ. The ferric reducing ability of plasma (FRAP) as a measure of "antioxidant power": the FRAP assay. *Analytical biochemistry* 1996;239(1):70-76.
20. Sun J, Zhang X, Broderick M, Fein H. Measurement of nitric oxide production in biological systems by using Griess reaction assay. *Sensors* 2003;3(8):276-284.
21. Sukumar P, Viswambharan H, Imrie H, Cubbon RM, Yuldasheva N, Gage M, Galloway S, Skromna A, Kandavelu P, Santos CX, Gatenby VK. Nox2 NADPH oxidase has a critical role in insulin resistance-related endothelial cell dysfunction. *Diabetes*. 2013 Jun 1;62(6):2130-2134.

22. Ceriello A, Assaloni R, Da Ros R, Maier A, Piconi L, Quagliaro L, Giugliano D. Effect of atorvastatin and irbesartan, alone and in combination, on postprandial endothelial dysfunction, oxidative stress, and inflammation in type 2 diabetic patients. *Circulation* 2005;111(19):2518-2524.
23. Edwin Ho, Galougahi KK, Liu CC, Bhindi R, Figtree GA. Biological markers of oxidative stress: applications to cardiovascular research and practice. *Redox biology* 2013;1(1):483-491.
24. UK Prospective Diabetes Study (UKPDS) Group. Effect of intensive blood-glucose control with metformin on complications in overweight patients with type 2 diabetes (UKPDS 34). *The Lancet* 1998;352(9131):854-865.
25. Inzucchi SE, Bergenstal RM, Buse JB, Diamant M, Ferrannini E, Nauck M, Matthews DR. Management of hyperglycemia in type 2 diabetes: a patient-centred approach position statement of the American Diabetes Association (ADA) and the European Association for the Study of Diabetes (EASD). *Diabetes care* 2012;35(6):1364-1379.
26. Hollander P. Anti-diabetes and anti-obesity medications: effects on weight in people with diabetes. *Diabetes Spectrum* 2007;20(3):159.
27. Khan R. Weight gain and insulin therapy. *The British Journal of Diabetes and Vascular Disease* 2004;4(4):264-267.
28. Mazzola N. Review of current and emerging therapies in type 2 diabetes mellitus. *The American journal of managed care* 2012;18(1 Suppl):S17-S26.
29. Yki-Järvinen H, Kauppinen-Mäkelin R, Tiikkainen M, Vähätalo M, Virtamo H, Nikkilä K, et al. Insulin glargine or NPH combined with metformin in type 2 diabetes: the LANMET study. *Diabetologia* 2006;49(3):442-451.
30. Solano MP, Goldberg RB. Lipid management in type 2 diabetes. *Clinical Diabetes* 2006;24(1):27.
31. Hisalkar PJ, Patne AB, Fawade MM. Assessment of plasma antioxidant levels in type 2 diabetes patients. *Int J Biol Med Res* 2012;3(2):1796-1800.
32. Alam R, Khan S, Salman KA. MDA and antioxidants status in type 2 diabetes mellitus. *National Journal of Integrated research in Medicine* 2013;4(6):75-78.
33. Valabhji J, Elkeles RS. Dyslipidaemia in type 2 diabetes: epidemiology and biochemistry. *The British Journal of Diabetes and Vascular Disease* 2003;3(3):184-189.
34. Kassem SA, Raz I. Is there evidence that oral hypoglycemic agents reduce cardiovascular morbidity or mortality? No. *Diabetes care* 2009;32(suppl 2):S337-S341.
35. Toledo, FG, Sniderman AD, Kelley DE. Influence of hepatic steatosis (fatty liver) on severity and composition of dyslipidemia in type 2 diabetes. *Diabetes care* 2006;29(8):1845-1850.
36. Ajjan RA, Grant PJ. Cardiovascular disease prevention in patients with type 2 diabetes: the role of oral anti-diabetic agents. *Diabetes and Vascular Disease Research* 2006;3(3):147-158.
37. Song F, Jia W, Yao Y, Hu Y, Lei L, Lin J, et al. and Liu, L. Oxidative stress, antioxidant status and DNA damage in patients with impaired glucose regulation and newly diagnosed Type 2 diabetes. *Clinical Science* 2007;112(12):599-606.
38. Wolff SP, Dean RT. Glucose autooxidation and protein modification. The potential role of 'autooxidative glycosylation' in diabetes. *Biochemical Journal* 1987;245(1):243-250.
39. Jain SK, Lim G. Pyridoxine and pyridoxamine inhibits superoxide radicals and prevents lipid peroxidation, protein glycosylation, and (Na<sup>++</sup> K<sup>+</sup>)-ATPase activity reduction in high glucose-treated human erythrocytes. *Free Radical Biology and Medicine* 2001;30(3):232-237.
40. Tiwari BK, Pandey KB, Abidi AB, Rizvi SI. Markers of oxidative stress during diabetes mellitus. *Journal of biomarkers* 2013;2013:1-8.
41. Davis BJ, Xie Z, Viollet B, Zou MH. Activation of the AMP-activated kinase by antidiabetes drug metformin stimulates nitric oxide synthesis in vivo by promoting the association of heat shock protein 90 and endothelial nitric oxide synthase. *Diabetes* 2006;55(2):496-505.
42. Triggler CR, Ding H. Cardiovascular impact of drugs used in the treatment of diabetes. *Therapeutic advances in chronic disease* 2014;5(6):245-268.
43. Tousoulis D, Kampoli AM, Stefanadis C. Diabetes mellitus and vascular endothelial dysfunction: current perspectives. *Current vascular pharmacology* 2012;10(1):19-32.
44. Hamilton, S. J., Chew, G. T., and Watts, G. F. Therapeutic regulation of endothelial dysfunction in type 2 diabetes mellitus. *Diabetes and Vascular Disease Research* 2007;4(2):89-102.
45. De Vriese AS, Verbeuren TJ, Van de Voorde J, Lameire NH, and Vanhoutte, P. M. Endothelial dysfunction in diabetes. *British journal of pharmacology* 2000;130(5):963-974.
46. Shanik MH, Xu Y, Skrha J, Dankner R, Zick Y, Roth J. Insulin resistance and hyperinsulinemia: Is hyperinsulinemia the cart of the horse?. *Diabetes care* 2008;31:S262-S268.
47. Kahn SE, Hull RL, Utzschneider KM. Mechanisms linking obesity to insulin resistance and type 2 diabetes. *Nature* 2006;2006;444(7121):840-846.
48. Cao W, Yu LH, Tao H, Zhenqi L. Excess exposure of insulin may be the primary cause of insulin resistance. *Am J Physiol Endocrinol Metab* 2010;298:E372.